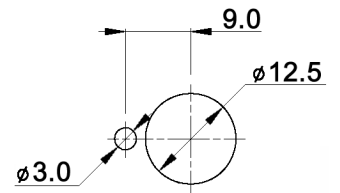


PANEL MOUNTING



CONTACT ARRANGEMENT

code for x	function	toggle towards keyway	toggle opposite to keyway
D	On-On	1-2	2-3
F	Mom-On		

code for x	function	toggle towards keyway	toggle in center	toggle opposite to keyway
E	On-Off-On			
G	Mom-Off-Mom	1-2	open	2-3
H	Mom-Off-On			

Specifications:

- Contact rating:** 3A, 250V AC / 6A, 125V AC  
4A, 30V DC / 5A, 12V DC  
6A, 6V DC
- Contact resistance:** 20mOhm max.
- Insulation resistance:** 1 000MOhm min. at 500V DC
- Dielectric strength:** 1 500V, 50Hz for the duration of 1 minute
- Operating temperature:** -45°C to +140°C
- Mechanical life:** min. 200 000 cycles
- Soldering conditions:** hand-soldering: max.: 420°C, 3sec., 60W  
auto-soldering: max.: 270°C, 5sec.
- Mounting instruction:** max. torque: 137Ncm
- Material:** Terminal / contact: brass, silver plated  
Case: DAP  
Housing: stainless steel, CNS9265  
Bushing: copper alloy, C3604BD nickel plated  
Actuator: copper alloy, C3604BD chrome plated
- Included accessories:** 2 pcs. nut 15/32-32, nickel plated, 14mm wrench size  
1 pc. tooth washer  
1 pc. locking washer



Tolerances: 0.00: ±0.25mm 0.0: ±0.40mm		Date	Name	<h1>MTG 106 x</h1>
		04/09	dr	
			<b>knitter-switch</b>	<h1>30 18 01</h1>
Dimension	01/11	dr		Page 1/1
Modifications	Date	Name		